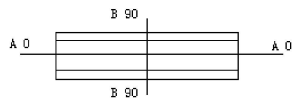
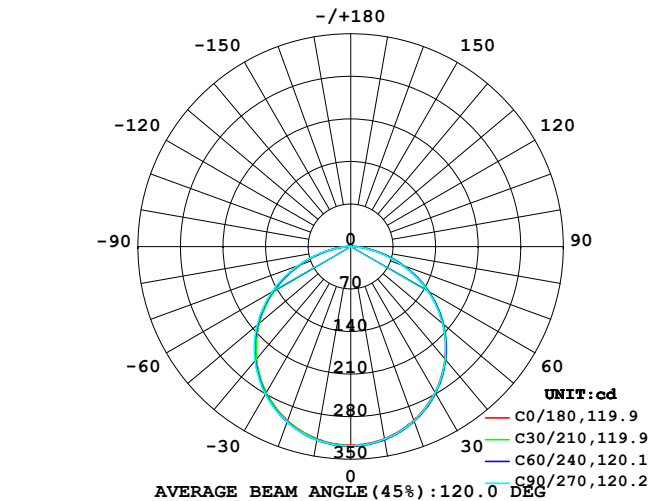


LUMINAIRE PHOTOMETRIC TEST REPORT

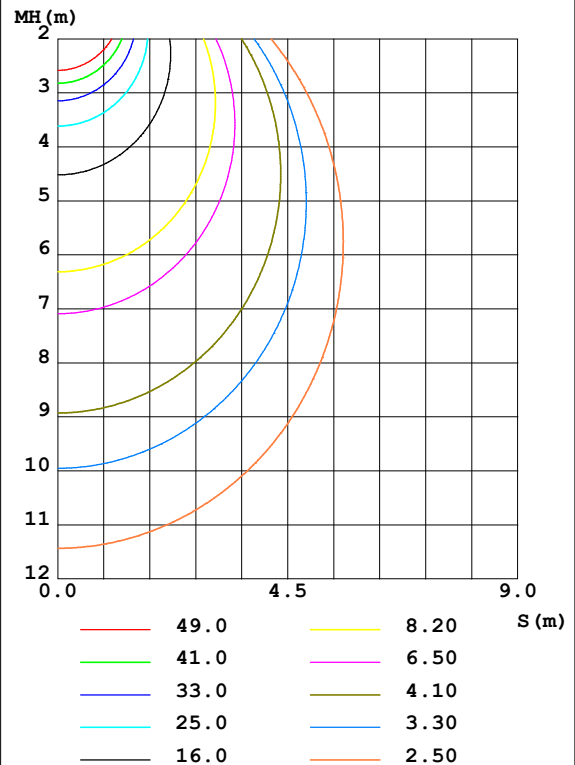
Test:U:24.00V I:0.800A P:19.20W PF:1.000 Freq:0Hz Lamp Flux:948.233x1 lm		
NAME: 5050224-1800	TYPE:	WEIGHT:
SPEC.:	DIM.:	SERIAL No.: 2025123004
MFR.:	SUR.:	Shielding Angle:

DATA OF LAMP		PHOTOMETRIC DATA Eff: 49.39 lm/W			
MODEL		I _{max} (cd)	328.4	S/MH (C0/180)	1.26
NOMINAL POWER (W)		LOR (%)	100.0	S/MH (C90/270)	1.27
RATED VOLTAGE (V)	24	TOTAL FLUX (lm)	948.23	η UP, DN (C0-180)	0.1, 49.8
NOMINAL FLUX (lm)	948.233	CIE CLASS	DIRECT	η UP, DN (C180-360)	0.1, 50.1
LAMPS INSIDE	1	η up (%)	0.1	CIBSE SHR NOM	1.25
TEST VOLTAGE (V)	24	η down (%)	99.9	CIBSE SHR MAX	1.35

LUMINOUS INTENSITY DISTRIBUTION DIAGRAM



C0 PLANE ISOLUX DIAGRAM (UNIT:lx)



C Range: 0 - 360DEG
C Interval: 15.0DEG
Test Speed: HIGH
Temperature: 25DEG
Operators: SENPU
Test Date: 2025-12-30

γ Range: 0 - 100DEG
γ Interval: 1.0DEG
Test System: EVERFINE GO-2000B_V1 SYSTEM V2.00.444
Humidity: 61%
Test Distance: 8.000m [K=1.0000]
Remarks:

ZONAL FLUX DIAGRAM

ZONAL FLUX DIAGRAM:

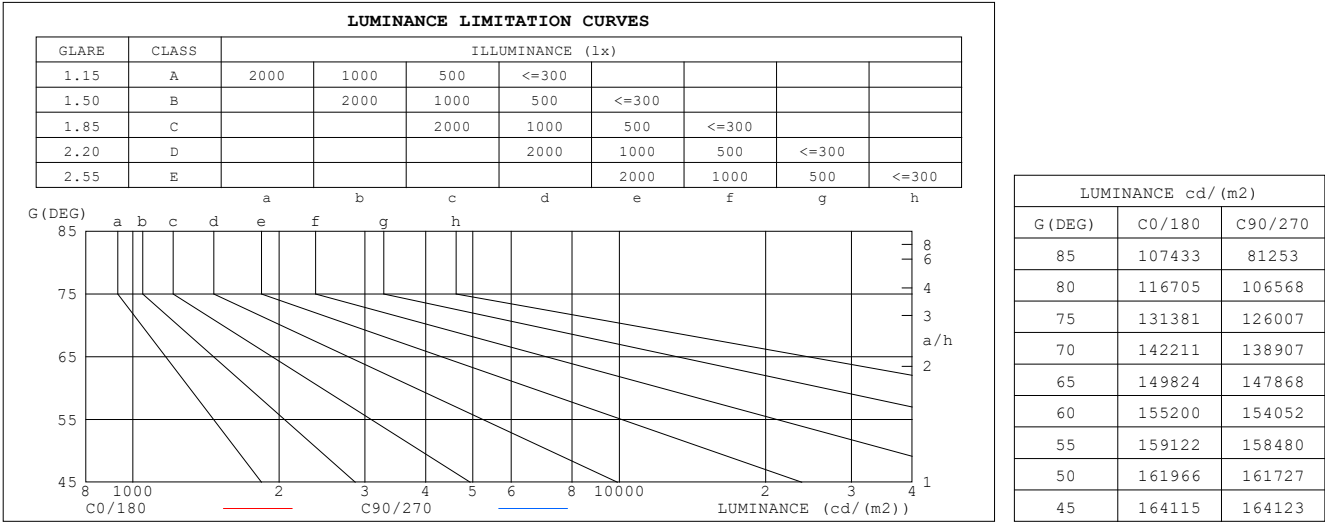
γ	C0	C45	C90	C135	C180	C225	C270	C315	γ	Φ zone	Φ total	%lum,lamp
10	320.9	322.7	321.7	321.2	321.2	322.5	322.9	322.3	0- 10	30.99	30.99	3.27,3.27
20	304.0	306.4	304.8	304.3	304.7	305.9	307.0	306.3	10- 20	88.87	119.9	12.6,12.6
30	277.2	279.7	277.8	277.1	278.0	278.7	280.8	279.8	20- 30	135.1	255.0	26.9,26.9
40	241.4	244.1	241.6	240.8	241.7	242.3	245.2	244.4	30- 40	163.7	418.7	44.2,44.2
50	197.8	200.0	197.5	195.8	197.3	197.2	201.2	200.5	40- 50	170.7	589.4	62.2,62.2
60	147.4	149.4	146.3	144.1	146.0	145.3	149.9	149.8	50- 60	155.0	744.4	78.5,78.5
70	92.41	94.11	90.27	87.64	90.14	88.69	93.25	94.08	60- 70	118.1	862.5	91,91
80	38.50	39.36	35.16	32.87	36.40	34.29	36.80	37.43	70- 80	66.42	928.9	98,98
90	6.228	5.057	0.2722	2.629	4.007	2.974	0.1155	3.652	80- 90	18.04	947.0	99.9,99.9
100	0.8875	0.7455	0.2662	0.3017	0.1864	0.4259	0.1509	0.1508	90-100	1.244	948.2	100,100
110	0	0	0	0	0	0	0	0	100-110	0.0196	948.2	100,100
120	0	0	0	0	0	0	0	0	110-120	0	948.2	100,100
130	0	0	0	0	0	0	0	0	120-130	0	948.2	100,100
140	0	0	0	0	0	0	0	0	130-140	0	948.2	100,100
150	0	0	0	0	0	0	0	0	140-150	0	948.2	100,100
160	0	0	0	0	0	0	0	0	150-160	0	948.2	100,100
170	0	0	0	0	0	0	0	0	160-170	0	948.2	100,100
180	0	0	0	0	0	0	0	0	170-180	0	948.2	100,100
DEG	LUMINOUS INTENSITY:cd									UNIT:lm		

C Range: 0 - 360DEG
 C Interval: 15.0DEG
 Test Speed: HIGH
 Temperature:25DEG
 Operators:SENPU
 Test Date:2025-12-30

γ Range: 0 - 100DEG
 γ Interval: 1.0DEG
 Test System:EVERFINE GO-2000B_V1 SYSTEM V2.00.444
 Humidity:61%
 Test Distance:8.000m [K=1.0000]
 Remarks:

LUMINANCE LIMITATION CURVES

Test:U:24.00V I:0.800A P:19.20W PF:1.000 Freq:0Hz Lamp Flux:948.233x1 lm		
NAME: 5050224-1800	TYPE:	WEIGHT:
SPEC.:	DIM.:	SERIAL No.: 2025123004
MFR.:	SUR.:	Shielding Angle:



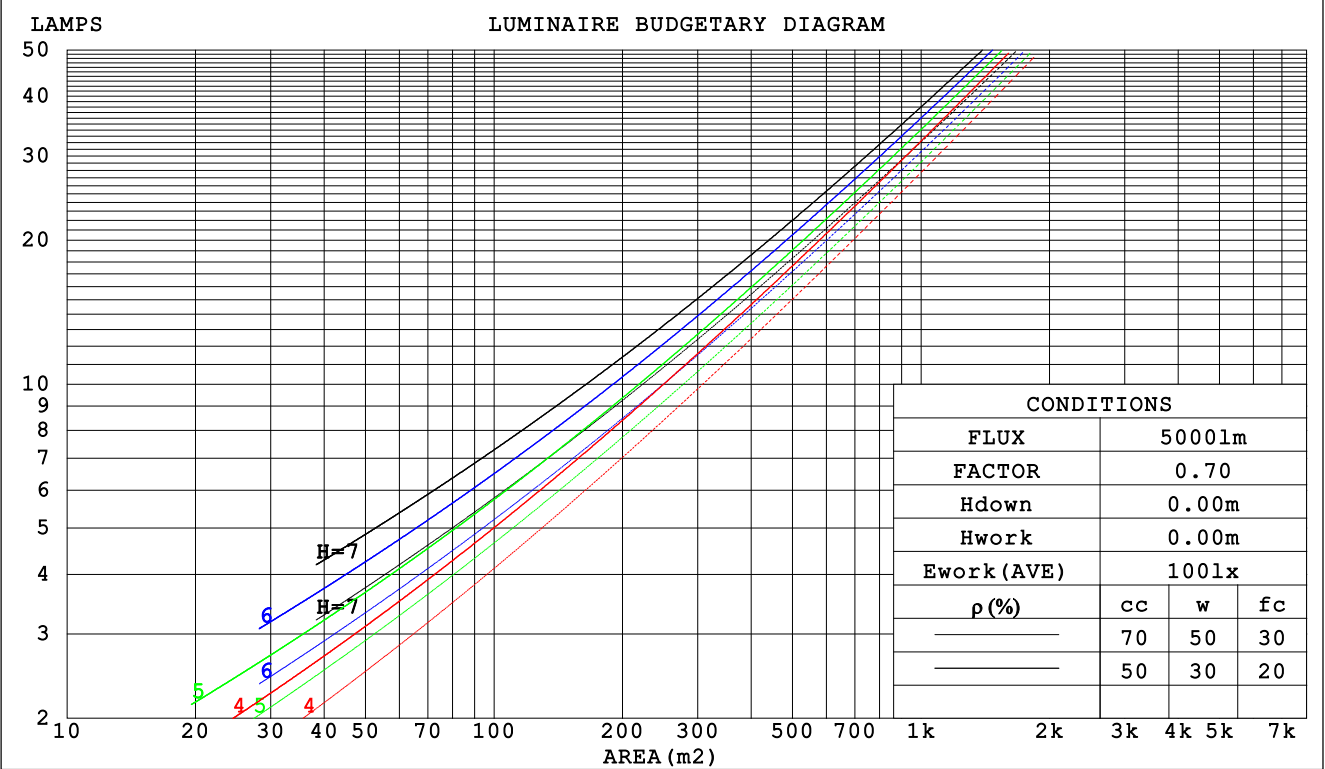
C Range: 0 - 360DEG
C Interval: 15.0DEG
Test Speed: HIGH
Temperature:25DEG
Operators:SENPU
Test Date:2025-12-30

γ Range: 0 - 100DEG
γ Interval: 1.0DEG
Test System:EVERFINE GO-2000B_V1 SYSTEM V2.00.444
Humidity:61%
Test Distance:8.000m [K=1.0000]
Remarks:

CU AND LUMINAIRE BUDGETARY ESTIMATE DIAGRAM

Test:U:24.00V I:0.800A P:19.20W PF:1.000 Freq:0Hz Lamp Flux:948.233x1 lm		
NAME: 5050224-1800	TYPE:	WEIGHT:
SPEC.:	DIM.:	SERIAL No.: 2025123004
MFR.:	SUR.:	Shielding Angle:

ρcc	80%			70%			50%			30%			10%			0
ρw	50%	30%	10%	50%	30%	10%	50%	30%	10%	50%	30%	10%	50%	30%	10%	0
ρfc	20%			20%			20%			20%			20%			0
RCR	RCR:Room Cavity Ratio						Coefficients of Utilization(CU)									
0.0	1.19	1.19	1.19	1.16	1.16	1.16	1.11	1.11	1.11	1.06	1.06	1.06	1.02	1.02	1.02	.00
1.0	1.04	.99	.96	1.02	.98	.94	.97	.94	.91	.93	.91	.88	.90	.88	.86	.83
2.0	.90	.83	.78	.88	.82	.77	.85	.79	.75	.82	.77	.73	.78	.75	.71	.69
3.0	.79	.71	.64	.78	.70	.64	.75	.68	.63	.72	.66	.62	.69	.64	.60	.58
4.0	.70	.61	.54	.69	.60	.54	.66	.59	.53	.64	.58	.53	.62	.56	.52	.50
5.0	.63	.53	.47	.61	.53	.46	.59	.52	.46	.57	.51	.45	.55	.50	.45	.43
6.0	.56	.47	.41	.55	.47	.41	.53	.46	.40	.52	.45	.40	.50	.44	.39	.37
7.0	.51	.42	.36	.50	.42	.36	.49	.41	.36	.47	.40	.35	.46	.40	.35	.33
8.0	.46	.38	.32	.46	.38	.32	.44	.37	.32	.43	.36	.31	.42	.36	.31	.29
9.0	.43	.34	.29	.42	.34	.29	.41	.34	.29	.40	.33	.28	.39	.33	.28	.26
10.0	.39	.31	.26	.39	.31	.26	.38	.31	.26	.37	.30	.26	.36	.30	.26	.24



C Range: 0 - 360DEG
C Interval: 15.0DEG
Test Speed: HIGH
Temperature:25DEG
Operators:SENPU
Test Date:2025-12-30

γ Range: 0 - 100DEG
γ Interval: 1.0DEG
Test System:EVERFINE GO-2000B_V1 SYSTEM V2.00.444
Humidity:61%
Test Distance:8.000m [K=1.0000]
Remarks:

WEC AND CCEC

Test:U:24.00V I:0.800A P:19.20W PF:1.000 Freq:0Hz Lamp Flux:948.233x1 lm		
NAME: 5050224-1800	TYPE:	WEIGHT:
SPEC.:	DIM.:	SERIAL No.: 2025123004
MFR.:	SUR.:	Shielding Angle:

pcc	80%			70%			50%			30%			10%			0	
pw	50%	30%	10%	50%	30%	10%	50%	30%	10%	50%	30%	10%	50%	30%	10%	0	
pfc	20%			20%			20%			20%			20%			0	
RCR	RCR:Room Cavity Ratio						Wall Exitance Coefficients(WEC)										
0.0																	
1.0	.311	.177	.056	.304	.173	.055	.290	.167	.053	.278	.160	.051	.267	.155	.050		
2.0	.293	.160	.049	.286	.158	.049	.275	.153	.047	.264	.148	.046	.254	.143	.045		
3.0	.271	.144	.043	.265	.142	.043	.255	.138	.042	.245	.134	.041	.236	.131	.040		
4.0	.250	.130	.038	.245	.128	.038	.236	.125	.037	.227	.122	.037	.219	.119	.036		
5.0	.231	.118	.034	.227	.116	.034	.218	.114	.033	.211	.111	.033	.204	.109	.033		
6.0	.214	.107	.031	.210	.106	.031	.203	.104	.030	.196	.102	.030	.190	.100	.030		
7.0	.199	.099	.028	.196	.098	.028	.189	.096	.028	.183	.094	.027	.177	.092	.027		
8.0	.186	.091	.026	.183	.090	.025	.177	.089	.025	.172	.087	.025	.167	.085	.025		
9.0	.174	.084	.024	.172	.084	.023	.166	.082	.023	.161	.081	.023	.157	.080	.023		
10.0	.164	.079	.022	.161	.078	.022	.157	.077	.022	.152	.076	.021	.148	.074	.021		

pcc	80%			70%			50%			30%			10%			0
pw	50%	30%	10%	50%	30%	10%	50%	30%	10%	50%	30%	10%	50%	30%	10%	0
pfc	20%			20%			20%			20%			20%			0
RCR	RCR:Room Cavity Ratio						Ceiling Cavity Exitance Coefficients (CCEC)									
0.0	.191	.191	.191	.164	.164	.164	.112	.112	.112	.064	.064	.064	.021	.021	.021	
1.0	.181	.157	.135	.155	.135	.116	.106	.093	.081	.061	.054	.047	.020	.017	.015	
2.0	.173	.133	.099	.149	.114	.086	.102	.079	.060	.059	.046	.035	.019	.015	.011	
3.0	.166	.115	.075	.142	.099	.065	.098	.069	.046	.056	.040	.027	.018	.013	.009	
4.0	.158	.102	.059	.136	.088	.051	.093	.061	.036	.054	.036	.021	.017	.012	.007	
5.0	.151	.092	.048	.129	.079	.042	.089	.055	.030	.052	.033	.018	.017	.011	.006	
6.0	.143	.083	.040	.123	.072	.035	.085	.050	.025	.049	.030	.015	.016	.010	.005	
7.0	.137	.076	.034	.118	.066	.030	.081	.046	.021	.047	.027	.013	.015	.009	.004	
8.0	.130	.071	.030	.112	.061	.026	.078	.043	.018	.045	.025	.011	.015	.008	.004	
9.0	.124	.066	.026	.107	.057	.023	.074	.040	.016	.043	.024	.010	.014	.008	.003	
10.0	.118	.061	.023	.102	.053	.020	.071	.038	.015	.041	.022	.009	.013	.007	.003	

C Range: 0 - 360DEG
C Interval: 15.0DEG
Test Speed: HIGH
Temperature:25DEG
Operators:SENPU
Test Date:2025-12-30

γ Range: 0 - 100DEG
γ Interval: 1.0DEG
Test System:EVERFINE GO-2000B_V1 SYSTEM V2.00.444
Humidity:61%
Test Distance:8.000m [K=1.0000]
Remarks:

UGR(Unified Glare Rating) Table

Test:U:24.00V I:0.800A P:19.20W PF:1.000 Freq:0Hz Lamp Flux:948.233x1 lm										
NAME: 5050224-1800					TYPE:			WEIGHT:		
SPEC.:					DIM.:			SERIAL No.: 2025123004		
MFR.:					SUR.:			Shielding Angle:		
ceiling/cavity	0.7	0.7	0.5	0.5	0.3	0.7	0.7	0.5	0.5	0.3
walls	0.5	0.3	0.5	0.3	0.3	0.5	0.3	0.5	0.3	0.3
working plane	0.2	0.2	0.2	0.2	0.2	0.2	0.2	0.2	0.2	0.2
Room dimensions	Viewed crosswise					Viewed endwise				
x = 2H y = 2H	30.6	32.1	30.9	32.3	32.5	30.5	32.1	30.8	32.3	32.5
3H	32.2	33.6	32.5	33.8	34.1	32.0	33.5	32.4	33.7	33.9
4H	32.8	34.1	33.1	34.4	34.6	32.6	34.0	32.9	34.2	34.5
6H	33.2	34.5	33.5	34.7	35.0	33.0	34.3	33.3	34.6	34.8
8H	33.3	34.6	33.7	34.9	35.1	33.1	34.3	33.5	34.6	34.9
12H	33.4	34.6	33.8	34.9	35.2	33.2	34.3	33.5	34.6	34.9
4H 2H	31.2	32.6	31.5	32.8	33.1	31.2	32.5	31.5	32.8	33.0
3H	33.0	34.1	33.3	34.4	34.8	32.9	34.0	33.2	34.3	34.6
4H	33.7	34.8	34.1	35.1	35.4	33.6	34.6	33.9	35.0	35.3
6H	34.3	35.2	34.7	35.6	36.0	34.1	35.0	34.5	35.4	35.8
8H	34.5	35.4	34.9	35.7	36.1	34.2	35.1	34.6	35.5	35.9
12H	34.6	35.4	35.0	35.8	36.2	34.3	35.1	34.7	35.5	35.9
8H 4H	34.0	34.9	34.4	35.2	35.6	33.9	34.7	34.3	35.1	35.5
6H	34.7	35.4	35.1	35.8	36.3	34.5	35.2	34.9	35.6	36.1
8H	35.0	35.6	35.4	36.1	36.5	34.7	35.4	35.2	35.8	36.3
12H	35.2	35.8	35.7	36.2	36.7	34.9	35.5	35.4	35.9	36.4
12H 4H	34.0	34.8	34.4	35.2	35.6	33.9	34.7	34.3	35.1	35.5
6H	34.8	35.4	35.2	35.8	36.3	34.6	35.2	35.0	35.6	36.1
8H	35.1	35.6	35.6	36.1	36.6	34.8	35.4	35.3	35.8	36.3
Variations with the observer position at spacings(CIE Pub.117):										
S = 1.0H	+ 0.2 / - 0.2					+ 0.2 / - 0.2				
1.5H	+ 0.2 / - 0.4					+ 0.2 / - 0.3				
2.0H	+ 0.2 / - 0.4					+ 0.2 / - 0.3				

CIE Pub.117, 948.2 lm Total Lamp Luminous Flux Corrected ($8\log(F/F_0) = -0.2$)
Area: 0.0019 m²

C Range: 0 - 360DEG
C Interval: 15.0DEG
Test Speed: HIGH
Temperature:25DEG
Operators:SENPU
Test Date:2025-12-30

γ Range: 0 - 100DEG
 γ Interval: 1.0DEG
Test System:EVERFINE GO-2000B_V1 SYSTEM V2.00.444
Humidity:61%
Test Distance:8.000m [K=1.0000]
Remarks:

UTILIZATION FACTORS TABLE

Test:U:24.00V I:0.800A P:19.20W PF:1.000 Freq:0Hz Lamp Flux:948.233x1 lm		
NAME: 5050224-1800	TYPE:	WEIGHT:
SPEC.:	DIM.:	SERIAL No.: 2025123004
MFR.:	SUR.:	Shielding Angle:

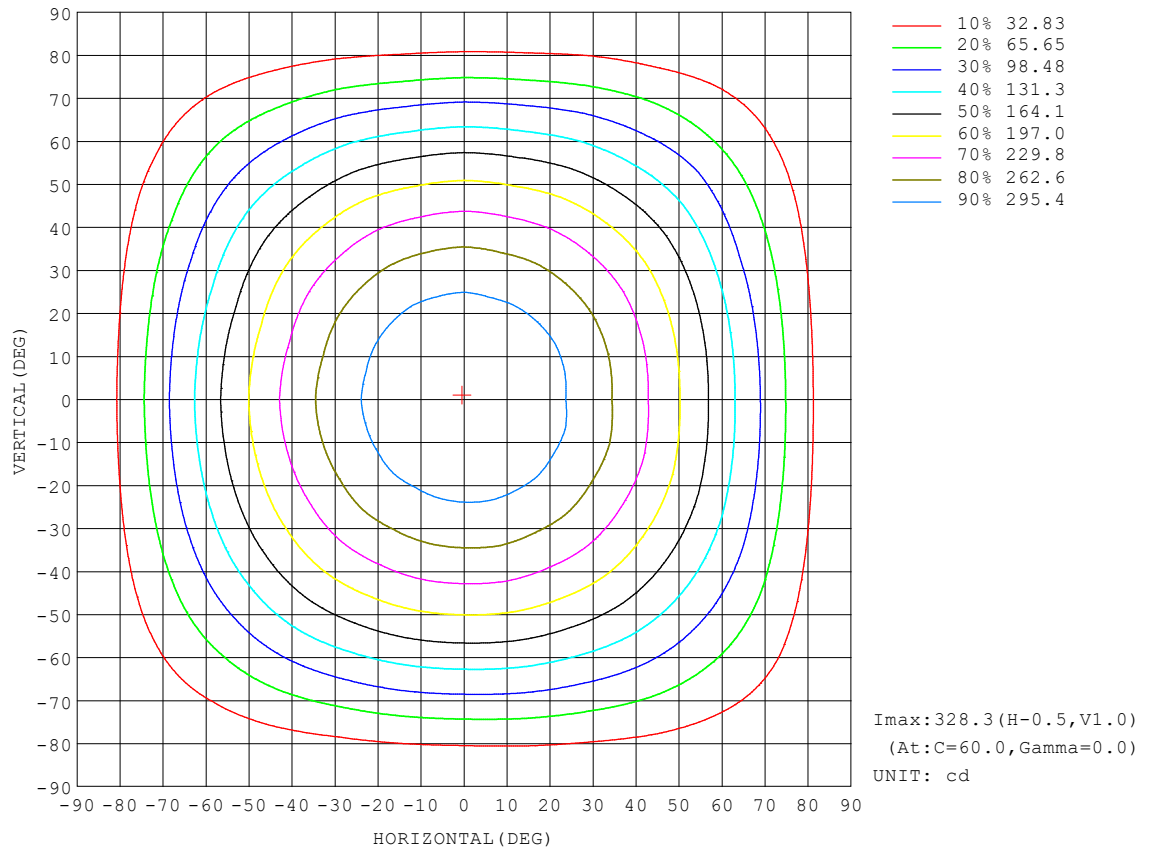
REFLECTANCE										
Ceiling	0.8	0.8	0.8	0.7	0.7	0.7	0.5	0.5	0.5	0
Walls	0.7	0.5	0.3	0.7	0.5	0.3	0.7	0.5	0.3	0
Working plane	0.2	0.2	0.2	0.2	0.2	0.2	0.2	0.2	0.2	0
ROOM INDEX	UTILIZATION FACTORS (PERCENT) $k(RI) \times RCR = 5$									
$k = 0.60$	57	46	39	56	45	38	55	45	38	32
0.80	67	56	48	66	55	48	64	54	48	41
1.00	76	65	57	75	64	57	72	65	56	49
1.25	83	72	65	81	72	65	79	70	64	57
1.50	88	78	71	86	77	70	83	75	69	62
2.00	95	86	80	93	85	79	89	83	77	70
2.50	99	91	85	97	90	84	93	87	82	74
3.00	102	95	90	100	94	89	96	91	86	78
4.00	106	100	96	104	99	94	99	95	92	83
5.00	109	104	100	106	102	98	102	98	95	86
ROOM INDEX	UF (total)									Direct
According to DIN EN 13032-2 2004			Suspended					SHRNOM = 1.25		

C Range: 0 - 360DEG
 C Interval: 15.0DEG
 Test Speed: HIGH
 Temperature: 25DEG
 Operators: SENPU
 Test Date: 2025-12-30

γ Range: 0 - 100DEG
 γ Interval: 1.0DEG
 Test System: EVERFINE GO-2000B_V1 SYSTEM V2.00.444
 Humidity: 61%
 Test Distance: 8.000m [K=1.0000]
 Remarks:

ISOCANDELA DIAGRAM

Test:U:24.00V I:0.800A P:19.20W PF:1.000 Freq:0Hz Lamp Flux:948.233x1 lm		
NAME: 5050224-1800	TYPE:	WEIGHT:
SPEC.:	DIM.:	SERIAL No.: 2025123004
MFR.:	SUR.:	Shielding Angle:

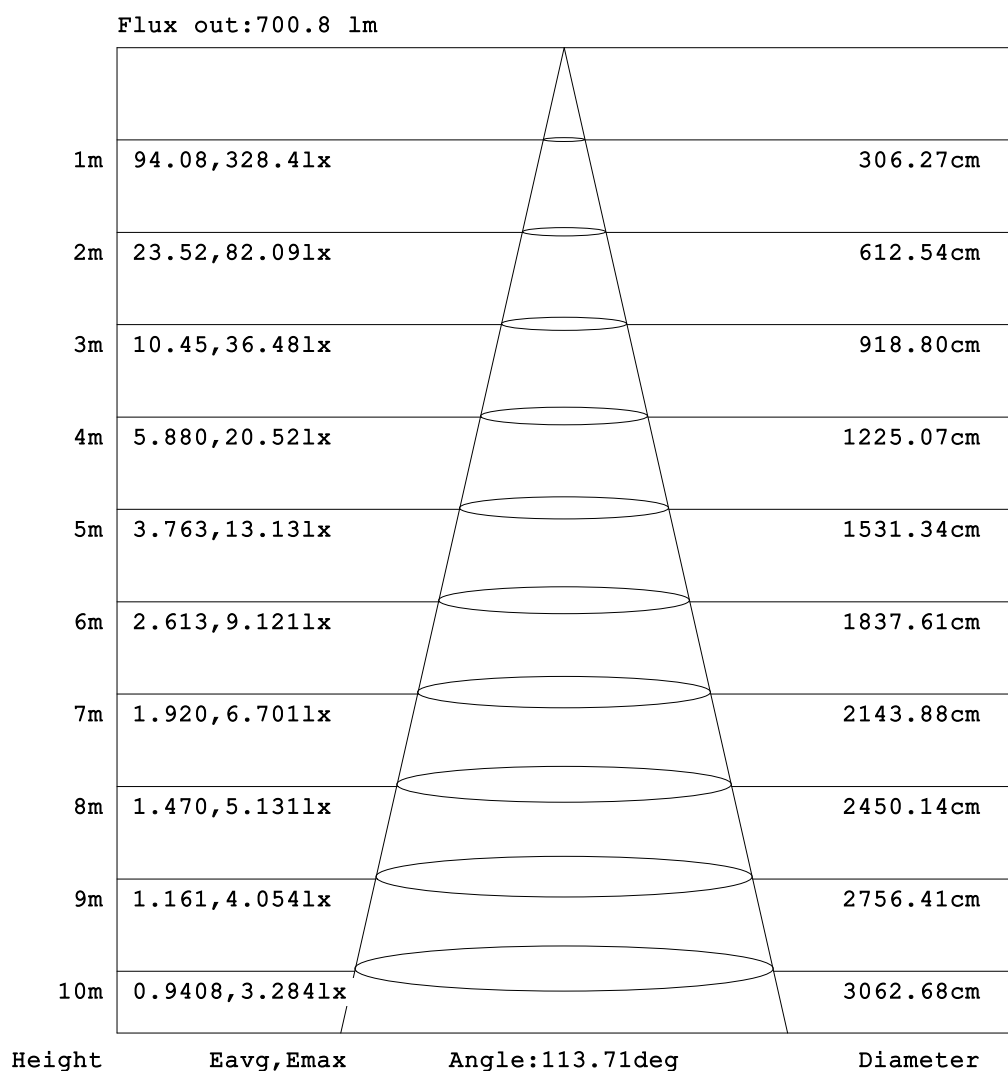


C Range: 0 - 360DEG
C Interval: 15.0DEG
Test Speed: HIGH
Temperature:25DEG
Operators:SENPU
Test Date:2025-12-30

γ Range: 0 - 100DEG
 γ Interval: 1.0DEG
Test System:EVERFINE GO-2000B_V1 SYSTEM V2.00.444
Humidity:61%
Test Distance:8.000m [K=1.0000]
Remarks:

AAI Figure

Test:U:24.00V I:0.800A P:19.20W PF:1.000 Freq:0Hz Lamp Flux:948.233x1 lm		
NAME: 5050224-1800	TYPE:	WEIGHT:
SPEC.:	DIM.:	SERIAL No.: 2025123004
MFR.:	SUR.:	Shielding Angle:



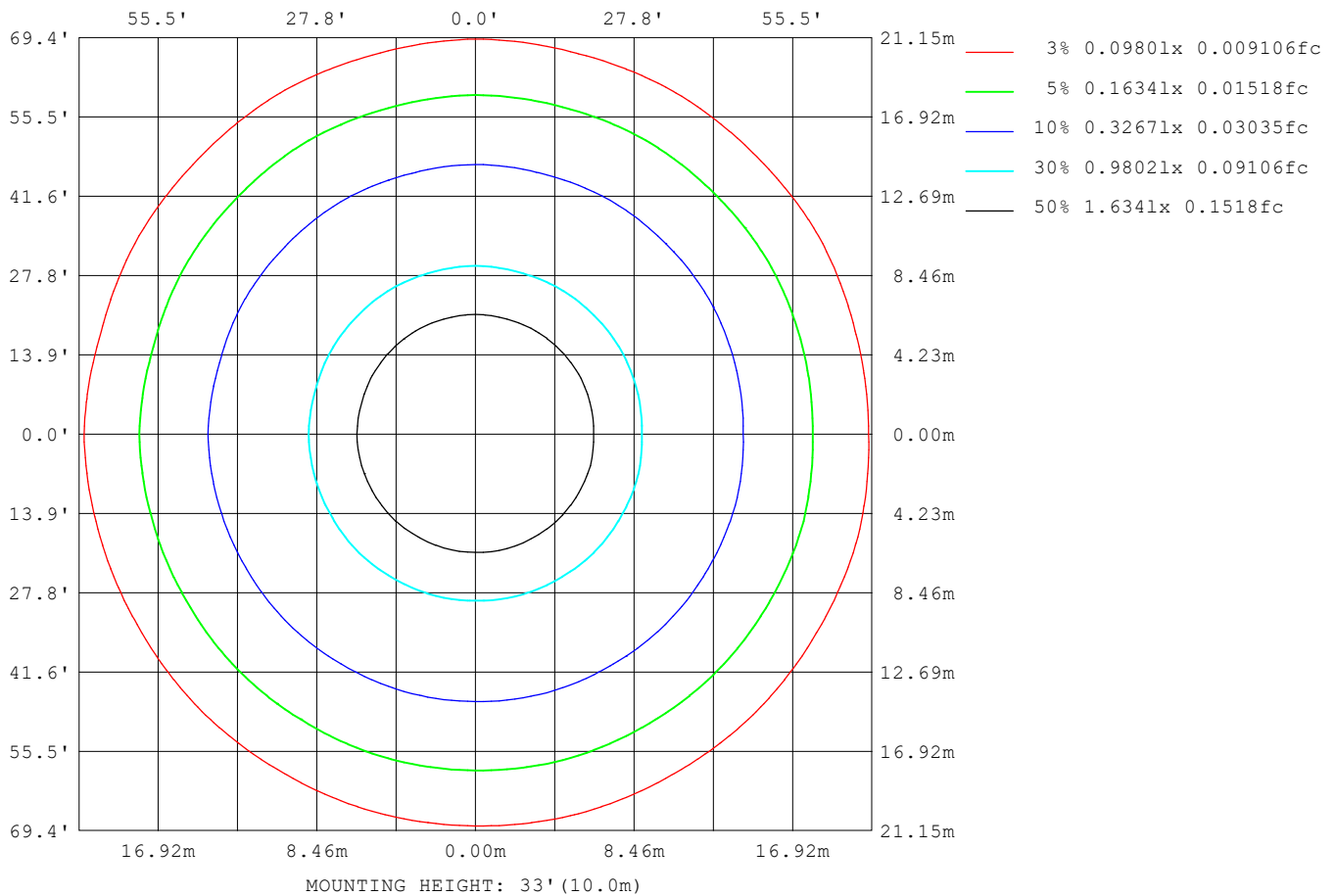
Note:The Curves indicate the illuminated area and the average illumination when the luminaire is at different distance.

C Range: 0 - 360DEG
C Interval: 15.0DEG
Test Speed: HIGH
Temperature:25DEG
Operators:SENPU
Test Date:2025-12-30

γ Range: 0 - 100DEG
 γ Interval: 1.0DEG
Test System:EVERFINE GO-2000B_V1 SYSTEM V2.00.444
Humidity:61%
Test Distance:8.000m [K=1.0000]
Remarks:

ISOLUX DIAGRAM

Test:U:24.00V I:0.800A P:19.20W PF:1.000 Freq:0Hz Lamp Flux:948.233x1 lm		
NAME: 5050224-1800	TYPE:	WEIGHT:
SPEC.:	DIM.:	SERIAL No.: 2025123004
MFR.:	SUR.:	Shielding Angle:



C Range: 0 - 360DEG
 C Interval: 15.0DEG
 Test Speed: HIGH
 Temperature: 25DEG
 Operators: SENPU
 Test Date: 2025-12-30

γ Range: 0 - 100DEG
 γ Interval: 1.0DEG
 Test System: EVERFINE GO-2000B_V1 SYSTEM V2.00.444
 Humidity: 61%
 Test Distance: 8.000m [K=1.0000]
 Remarks:

LED Avg.L Report

Test:U:24.00V I:0.800A P:19.20W PF:1.000 Freq:0Hz Lamp Flux:948.233x1 lm		
NAME: 5050224-1800	TYPE:	WEIGHT:
SPEC.:	DIM.:	SERIAL No.: 2025123004
MFR.:	SUR.:	Shielding Angle:

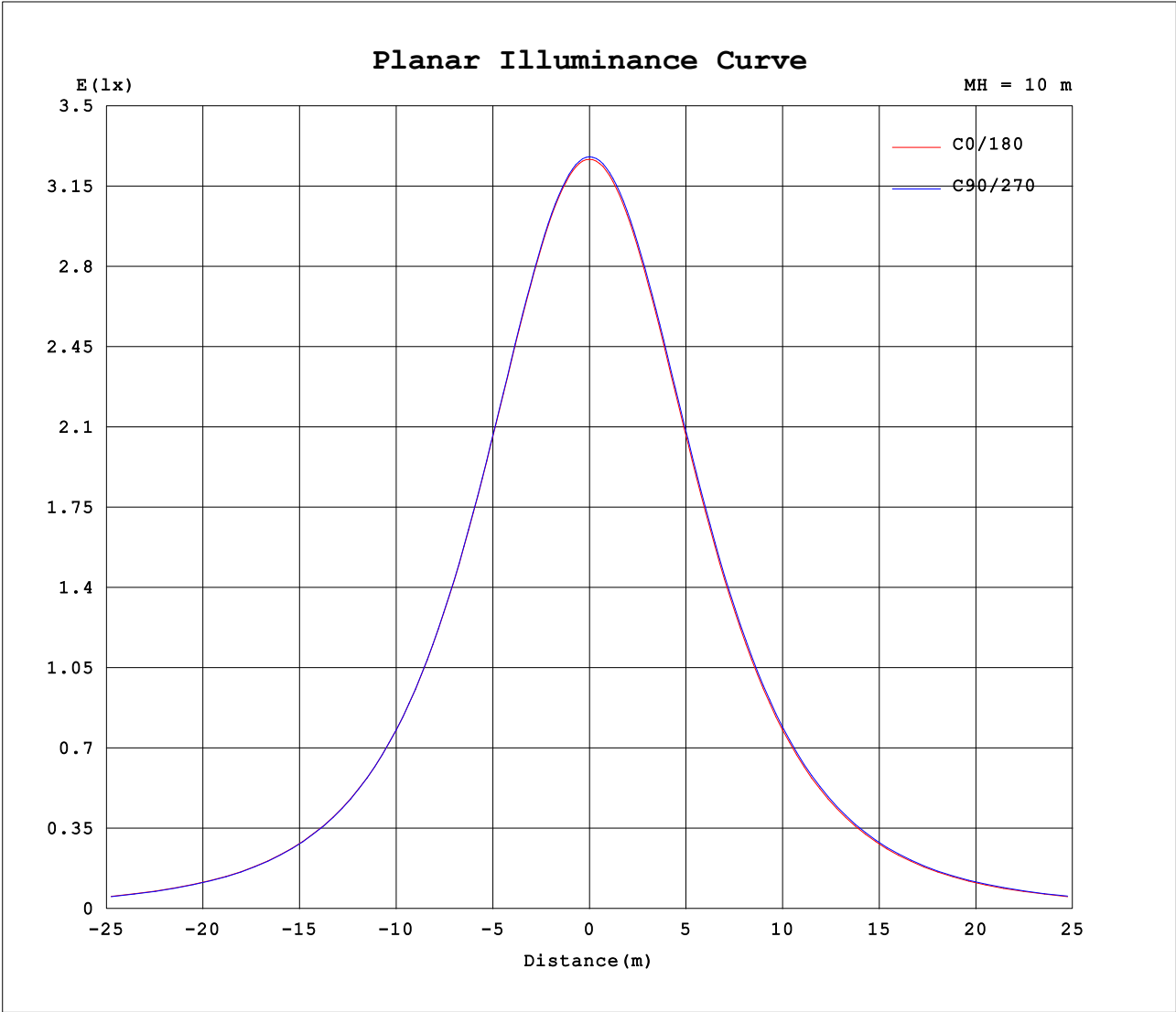
AvgL	cd/m2
L_0~180 (65) av	148622
L_0~180 (75) av	128918
L_0~180 (85) av	101670
L_90~270 (65) av	149947
L_90~270 (75) av	128357
L_90~270 (85) av	84015
L_45 (65) av	148782
L_45 (75) av	127883
L_45 (85) av	89563

Standard: GB/T 29293-2012

C Range: 0 - 360DEG
C Interval: 15.0DEG
Test Speed: HIGH
Temperature:25DEG
Operators:SENPU
Test Date:2025-12-30

γ Range: 0 - 100DEG
γ Interval: 1.0DEG
Test System:EVERFINE GO-2000B_V1 SYSTEM V2.00.444
Humidity:61%
Test Distance:8.000m [K=1.0000]
Remarks:

Planar Illuminance Curve



C Range: 0 - 360DEG
C Interval: 15.0DEG
Test Speed: HIGH
Temperature:25DEG
Operators:SENPU
Test Date:2025-12-30

γ Range: 0 - 100DEG
γ Interval: 1.0DEG
Test System:EVERFINE GO-2000B_V1 SYSTEM V2.00.444
Humidity:61%
Test Distance:8.000m [K=1.0000]
Remarks:

LUMINOUS DISTRIBUTION INTENSITY DATA

Test:U:24.00V I:0.800A P:19.20W PF:1.000 Freq:0Hz Lamp Flux:948.233x1 lm		
NAME: 5050224-1800	TYPE:	WEIGHT:
SPEC.:	DIM.:	SERIAL No.: 2025123004
MFR.:	SUR.:	Shielding Angle:

Table--1

UNIT: cd

C (DEG) γ (DEG)	0	15	30	45	60	75	90	105	120	135	150	165	180	195	210	225	240	255	270
0	327	328	328	328	328	328	328	327	326	327	327	327	327	328	328	328	328	328	328
5	325	327	326	327	327	327	326	325	324	326	326	326	325	326	326	327	327	327	327
10	321	322	322	323	322	322	322	321	320	321	321	321	321	321	322	323	323	323	323
15	314	316	315	316	315	315	315	314	311	314	314	314	314	314	315	315	316	316	316
20	304	306	306	306	305	306	305	304	300	304	304	304	305	304	305	306	307	307	307
25	292	294	293	294	293	293	293	292	291	292	291	292	293	292	293	294	295	294	295
30	277	280	279	280	279	279	278	277	276	277	276	277	278	276	278	279	280	280	281
35	260	263	262	263	262	262	261	260	259	260	259	260	261	259	261	262	263	263	264
40	241	245	243	244	243	243	242	241	240	241	239	240	242	240	242	242	244	244	245
45	220	223	222	223	222	222	220	220	219	219	218	219	221	218	220	221	223	222	224
50	198	201	200	200	199	199	198	197	196	196	195	195	197	195	197	197	200	199	201
55	173	176	175	175	174	174	173	172	171	171	169	170	172	169	172	172	175	174	176
60	147	151	149	149	148	148	146	146	144	144	143	144	146	143	145	145	148	148	150
65	120	123	122	122	121	120	119	118	116	116	115	116	118	115	117	117	120	119	122
70	92.4	95.6	94.2	94.1	92.3	92.2	90.3	89.6	87.6	87.6	86.2	87.3	90.1	86.3	88.6	88.7	91.2	90.7	93.3
75	64.6	67.4	66.2	66.0	64.3	63.9	62.0	61.1	59.1	59.1	58.0	59.2	62.2	58.7	60.2	60.5	62.4	62.1	64.3
80	38.5	40.9	39.6	39.4	37.6	37.2	35.2	34.5	32.7	32.9	32.1	33.3	36.4	33.2	34.1	34.3	35.6	35.4	36.8
85	17.8	19.1	17.9	17.5	16.0	15.3	13.5	13.2	12.3	12.7	12.4	13.2	15.9	13.3	13.6	13.5	14.1	13.7	14.4
90	6.23	6.60	5.66	5.06	4.08	1.68	0.27	1.68	2.30	2.63	2.54	2.60	4.01	2.82	2.92	2.97	3.02	2.51	0.12
95	2.20	2.25	2.00	1.59	1.25	0.43	0.27	0.28	0.47	0.50	0.50	0.42	0.47	0.49	0.58	0.84	0.89	0.83	0.12
100	0.89	0.95	0.93	0.75	0.46	0.28	0.27	0.28	0.29	0.30	0.33	0.36	0.19	0.21	0.28	0.43	0.19	0.14	0.15
105	0.00	0.00	0.00	0.00	0.00	0.00	0.00	0.00	0.00	0.00	0.00	0.00	0.00	0.00	0.00	0.00	0.00	0.00	0.00
110	0.00	0.00	0.00	0.00	0.00	0.00	0.00	0.00	0.00	0.00	0.00	0.00	0.00	0.00	0.00	0.00	0.00	0.00	0.00
115	0.00	0.00	0.00	0.00	0.00	0.00	0.00	0.00	0.00	0.00	0.00	0.00	0.00	0.00	0.00	0.00	0.00	0.00	0.00
120	0.00	0.00	0.00	0.00	0.00	0.00	0.00	0.00	0.00	0.00	0.00	0.00	0.00	0.00	0.00	0.00	0.00	0.00	0.00
125	0.00	0.00	0.00	0.00	0.00	0.00	0.00	0.00	0.00	0.00	0.00	0.00	0.00	0.00	0.00	0.00	0.00	0.00	0.00
130	0.00	0.00	0.00	0.00	0.00	0.00	0.00	0.00	0.00	0.00	0.00	0.00	0.00	0.00	0.00	0.00	0.00	0.00	0.00
135	0.00	0.00	0.00	0.00	0.00	0.00	0.00	0.00	0.00	0.00	0.00	0.00	0.00	0.00	0.00	0.00	0.00	0.00	0.00
140	0.00	0.00	0.00	0.00	0.00	0.00	0.00	0.00	0.00	0.00	0.00	0.00	0.00	0.00	0.00	0.00	0.00	0.00	0.00
145	0.00	0.00	0.00	0.00	0.00	0.00	0.00	0.00	0.00	0.00	0.00	0.00	0.00	0.00	0.00	0.00	0.00	0.00	0.00
150	0.00	0.00	0.00	0.00	0.00	0.00	0.00	0.00	0.00	0.00	0.00	0.00	0.00	0.00	0.00	0.00	0.00	0.00	0.00
155	0.00	0.00	0.00	0.00	0.00	0.00	0.00	0.00	0.00	0.00	0.00	0.00	0.00	0.00	0.00	0.00	0.00	0.00	0.00
160	0.00	0.00	0.00	0.00	0.00	0.00	0.00	0.00	0.00	0.00	0.00	0.00	0.00	0.00	0.00	0.00	0.00	0.00	0.00
165	0.00	0.00	0.00	0.00	0.00	0.00	0.00	0.00	0.00	0.00	0.00	0.00	0.00	0.00	0.00	0.00	0.00	0.00	0.00
170	0.00	0.00	0.00	0.00	0.00	0.00	0.00	0.00	0.00	0.00	0.00	0.00	0.00	0.00	0.00	0.00	0.00	0.00	0.00
175	0.00	0.00	0.00	0.00	0.00	0.00	0.00	0.00	0.00	0.00	0.00	0.00	0.00	0.00	0.00	0.00	0.00	0.00	0.00
180	0.00	0.00	0.00	0.00	0.00	0.00	0.00	0.00	0.00	0.00	0.00	0.00	0.00	0.00	0.00	0.00	0.00	0.00	0.00

C Range: 0 - 360DEG
C Interval: 15.0DEG
Test Speed: HIGH
Temperature:25DEG
Operators:SENPU
Test Date:2025-12-30

γ Range: 0 - 100DEG
γ Interval: 1.0DEG
Test System:EVERFINE GO-2000B_V1 SYSTEM V2.00.444
Humidity:61%
Test Distance:8.000m [K=1.0000]
Remarks:

LUMINOUS DISTRIBUTION INTENSITY DATA

Test:U:24.00V I:0.800A P:19.20W PF:1.000 Freq:0Hz Lamp Flux:948.233x1 lm		
NAME: 5050224-1800	TYPE:	WEIGHT:
SPEC.:	DIM.:	SERIAL No.: 2025123004
MFR.:	SUR.:	Shielding Angle:

Table--2

UNIT: cd

C (DEG) γ (DEG)	285	300	315	330	345														
0	327	326	327	327	327														
5	326	325	326	326	326														
10	322	321	322	322	322														
15	315	315	316	316	315														
20	306	306	306	306	306														
25	294	294	294	294	293														
30	279	280	280	280	279														
35	263	264	263	264	262														
40	244	245	244	245	243														
45	223	224	223	224	222														
50	200	201	200	201	200														
55	175	177	176	177	175														
60	149	151	150	151	149														
65	121	123	122	124	120														
70	92.6	94.5	94.1	95.0	90.1														
75	64.1	65.8	65.9	64.1	63.6														
80	37.0	38.6	37.4	38.2	37.7														
85	14.6	14.7	15.7	16.9	16.7														
90	2.30	3.07	3.65	4.48	4.86														
95	0.61	0.43	0.49	0.77	1.31														
100	0.14	0.14	0.15	0.19	0.42														
105	0.00	0.00	0.00	0.00	0.00														
110	0.00	0.00	0.00	0.00	0.00														
115	0.00	0.00	0.00	0.00	0.00														
120	0.00	0.00	0.00	0.00	0.00														
125	0.00	0.00	0.00	0.00	0.00														
130	0.00	0.00	0.00	0.00	0.00														
135	0.00	0.00	0.00	0.00	0.00														
140	0.00	0.00	0.00	0.00	0.00														
145	0.00	0.00	0.00	0.00	0.00														
150	0.00	0.00	0.00	0.00	0.00														
155	0.00	0.00	0.00	0.00	0.00														
160	0.00	0.00	0.00	0.00	0.00														
165	0.00	0.00	0.00	0.00	0.00														
170	0.00	0.00	0.00	0.00	0.00														
175	0.00	0.00	0.00	0.00	0.00														
180	0.00	0.00	0.00	0.00	0.00														

C Range: 0 - 360DEG
 C Interval: 15.0DEG
 Test Speed: HIGH
 Temperature:25DEG
 Operators:SENPU
 Test Date:2025-12-30

γ Range: 0 - 100DEG
 γ Interval: 1.0DEG
 Test System:EVERFINE GO-2000B_V1 SYSTEM V2.00.444
 Humidity:61%
 Test Distance:8.000m [K=1.0000]
 Remarks: